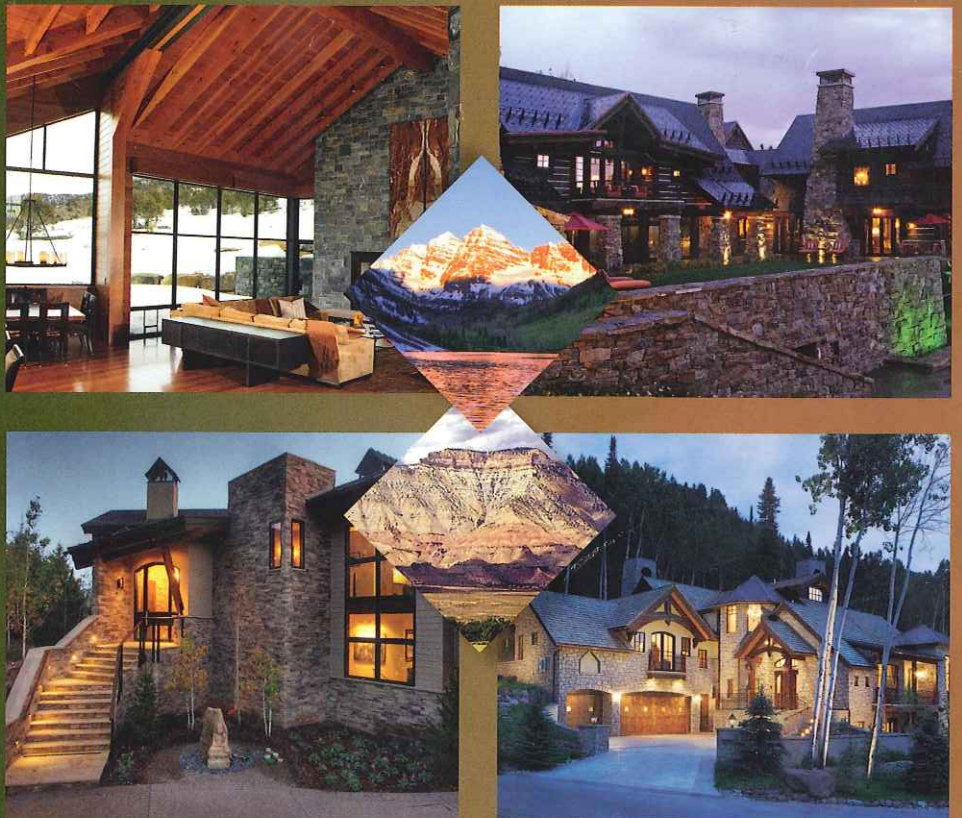


MOUNTAIN

BUILDER ARCHITECT

SPECIAL EDITION
PRODUCT SHOWCASE



ASPEN AND VAIL EDITION – SERVING GARFIELD, PITKIN AND EAGLE COUNTIES

VOLUME III
Edition 2

2012 DIRECTORY OF HIGH ALTITUDE BUILDING PROFESSIONALS AND RESOURCES

ASPEN SNOWMASS AND THE ROARING FORK VALLEY Parade



DAVID FIORE
Mountain Builder

Contributions by
Rosemary Carstens

Is your building team innovative, bringing cutting-edge technologies and efficient building systems? How creative is the design of your space? Does it efficiently combine luxury and comfort with a personal statement of uniqueness while balancing functionality? Simply, how would you know if your building team is providing you the best value for the service of design and the craft of building?

Building teams in Aspen/Snowmass and the Roaring Fork Valley stepped up last summer to have judges assess their homes on a variety of factors including craftsmanship, building standards, building systems, green building, building products and other criteria. Unbiased, trained professionals from outside the territory were recruited by local non-profit Mountain to Mesa Home Builders Association (M2M) to judge entries in the first annual Parade of Home and Home and Garden Show. M2M is part of the National Association of Home Builders (NAHB) and the Colorado Association of Home Builders (CAHB). NAHB's Home Builder Institute is dedicated to advancing the quality of craft, education and training for builder professionals.

Former Vail Resorts' CFO and Beaver Creek President Jack Acuff,



*Pictured: four members of the judging team:
Carol Acuff, Emil Wanatka, Jack Acuff and
Chris Elliott*

one of the Parade judges, noted, "The homes on tour in Aspen/Snowmass and the local area provided a museum view of showcase homes."

Acuff's was right when he noted including the "local area" as judges reviewed homes as far away as Rifle, Colo.; a modular building system home in Glenwood

Springs; and a mountaintop home above Aspen accessible only by 4-wheel drive (in good weather) or helicopter or Snowcat in the winter. Read on as Mountain Builder takes you on a post-Parade tour of the work of eight award-winning builder teams from Aspen to Glenwood Springs. These are the professionals whom the judges felt stood up to a peer review and are worthy of your consideration for their delivery of the best in design and craftsmanship.



BEST IN PARADE

**Jack Wilkie Builder, Lea Sisson
Architect, LLC & Magni Design**

Wilkie, Sisson and Magni Design swept four First Place Crystal Awards including Best in Parade, Home Builder Concept and Workmanship, Best Master Bedroom and best Exterior Design and Elevation. The team also placed in the top three for

Kitchen Design. The entry, a 7,800-square-foot home, is a one-of-a-kind with striking detail to blend the home with environmental unity to Aspen's Independence Pass. Jack Wilkie's commitment to the professional standards of NAHB was reflected in this award winning home. Wilkie is a member of M2M since 2010.

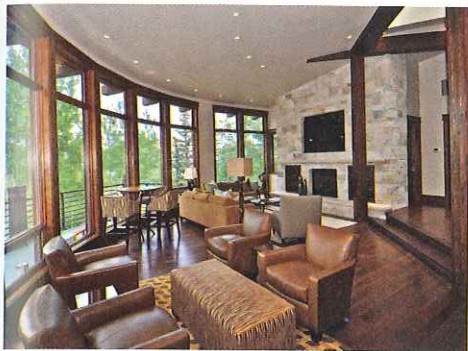
Considerable attention to integrate the buildings' design and construction with the land's geographic and natural features is apparent. Flagstone patios around existing rock outcroppings, two water features (including a natural pond), a built-in BBQ and fire pit, solid mahogany decking, glass rails, and well-designed lighting and sound systems generate site harmony. The team coordinated sophisticated interior materials and finish work. The great room



features a concrete and site-stone open fireplace, cedar-tongue-and-groove ceiling with fir beamwork, mahogany floors, and claro walnut cabinetry. A spiral staircase with glass treads and rusted-steel frame floats upward to an observation room for entertaining. Attention to detail and unique creativity was endless throughout. To contact Jack Wilkie Builder or Lea Sisson, architect, see the membership directory in this issue of Mountain Builder, page 13.

RUNNER UP BEST IN PARADE

Wild Wild West Development (GM Johnson Construction) and David Johnston Architects



Gary Johnson (GM Construction) and David Johnston Architects were consistently at the top of the building pack, taking more awards than any other building team in the Parade. Runner-up in eight categories

including Best in Parade, Home Exterior Design and Elevation, Home Kitchen, Master Bedroom, Interior Finishes, Home Builder Concept and Workmanship, Interior Furnishings, Landscape and Outdoor Living Space. Based on the team's consistent showing, the judge's gave a Special Recognition Award for "Excellence in interior design and exterior spaces which capture the beauty of the surrounding landscape, incorporating the recreational environment (Snowmass Village) into the exceptional use of the lot."

The entry, a 5,023-square-foot six-bedroom, six-bath home, has sweeping 360 degree views from its rooftop deck in Snowmass Village. Premium finishes and materials abound from cherry and clear alder custom-designed cabinets, rustic American black walnut flooring, to intricate handmade marble and glass tiles. The living room is graced with a Giallo Fiore stone fireplace with floor to ceiling windows. The grounds include a natural stream and pond with ski-in ski-out access. GM Johnson Construction / Wild Wild West Development is a member of M2M and their work reflects the professional standards ascribed by NAHB. For contact information see the membership directory in this issue of Mountain Builder, page 13.

THIRD OVERALL

Manchester Architects, Inc.



The overall scores were fractions apart for the top three building teams. Michael Manchester, Manchester Architects, entered the Summit House in Snowmass, Colo. The Summit House

took three First Place awards for its Kitchen Design, Interior Finishes, and Interior Furnishings. Summit House placed solidly in the top three for Best in Parade and for Exterior Design and Elevation, Home Builder Concept and Workmanship, and Home Landscape and Outdoor Living Spaces. Manchester's membership in M2M is a reflection of his commitment to professional building standards and to the profession.

The Summit House, a 3,000-square-foot four-bedroom, 4.5-bath, two-level home, uses natural materials and strike a blend of design elements which reveal the heart of mountain living. The home's main entrance is accessed via a dramatic stairway with a tempered glass guard rail and brushed steel accents. The open floor plan flows gracefully beneath coffered ceilings and timbered arches. Art Deco glass, etched-glass master bath surrounds, and glass block mirrors allow light to echo from room to room. To contact Manchester Architects see the membership directory on page 13 in this issue of Mountain Builder.

FOUR-AWARD WINNING TEAM

Heritage Builders; Bluegreen; Studio B Architects; Brenda Pringle Specialty Products, LLC



This four-time award winning team entered the Zen House, taking home a first place Crystal Award for Landscape and Outdoor Living Spaces created by Bluegreen, a renowned landscape architect

company based in Aspen. The team tied as runner-up for Interior Furnishings and was in the top three building teams awarded for its Master Bedroom and Interior Finishes. Heritage Builders and Bluegreen are both professional members of M2M.

The Zen House is a 9,067-square-foot five-bedroom, six-bath home with a 200 linear foot rammed-earth wall, vertical rusted panels, sandblasted masonry block, and zinc roofing. A wall of sliding glass panels that open to a private court yard with the quiet grace of an invisible-edge and Asian-style pool was just the start of what brought the Zen House its Crystal Award. The meandering grounds, framed by a Bruno Romeda sculpture, expanses of lawn, acres of flowers and almost 100 cottonwood, spruce, Austrian pine and maples trees make it a unique sanctuary near Aspen's Buttermilk Mountain. For contact information for Heritage Builders and Bluegreen, see the membership directory in this issue of Mountain Builder, page 13.

CHAIRMAN'S AWARD – CREATIVE SPACES [PHOTO NEXT PAGE]

Brewster McLeod Architects, Inc. and Interiors, Etc.

Jamie McLeod, Brewster McLeod Architects, was cited for her visionary use of space planning. By incorporating the topography of the site and uniquely capturing interior spaces she creates a luxuriously comfortable property with highly functional attributes incorporated throughout the home's design. Teammate Karen

CONTINUED ON NEXT PAGE